

THE NEC UTILITY MAINS SERVICES

OUR SERVICE

Our Mains delivery team has unrivalled experience of providing temporary mains to suit all your requirements. We can provide electricity, water, waste, compressed air or natural gas to your exhibition stand from our 30km of interconnecting floor duct system.

OUR PRODUCTS

For further information or to book any of the water, waste or gas services listed below, please contact our Sales & Customer Support Team on 084433 88338.

All electrical requirements MUST go through the nominated Electrical Stand Wiring Contractor for each exhibition

TOWN WATER & WASTE - DRAINAGE

If you need running water to your stand for hospitality or a demonstration, The NEC will be pleased to run your supply and waste mains. The water that is delivered to the stand is drawn from a potable (drinking) water source. We can also cater if you need to demonstrate a Spa Bath or Aquarium or have heavier duty industrial needs, such as cooling water to machine processes.

Typical 15mm water and 40mm waste for use on customers sinks, washing machines etc.



40mm waste NEC to carry out final connection to customers sink or equipment waste

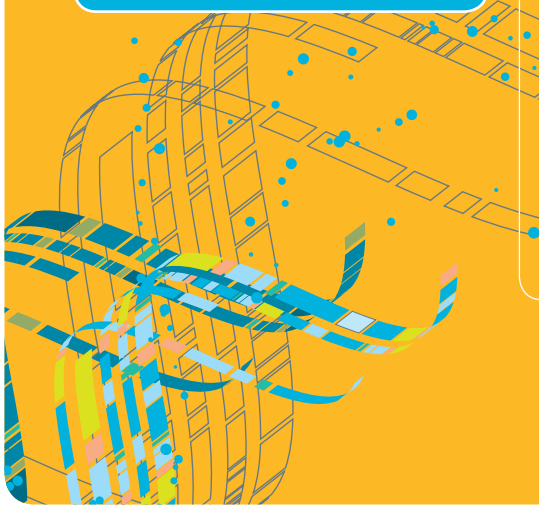
15mm water and valve NEC carry out final connection to customers tap or equipment

TECHNICAL DETAILS	
PRESSURE	5.6 BAR (85 PSI)
STANDARD CONNECTIONS	WATER SUPPLY AT 15MM (0.5 INCH) FLOW RATE AT 0.38 L / SEC (5 GALL/M)
STANDARD WASTE	40MM (1.5 INCH)

PLEASE NOTE: SINK / WATER HEATER UNITS ARE NOT INCLUDED AND ARE NOT SUPPLIED BY THE NEC LTD.

TECHNICAL DETAILS	
WATER	
STANDARD PIPEWORK	15MM (0.5 INCH)
WATER PRESSURE	5.6 BAR (85 PSI)
FLOW RATE	0.38 L/SEC (5 GALL/M)
WASTE	
STANDARD PIPEWORK	40MM (1.5 INCH)

PLEASE NOTE: SINK / WATER HEATER UNITS ARE NOT INCLUDED AND ARE NOT SUPPLIED BY THE NEC LTD.



THE NEC UTILITY MAINS SERVICES

COMPRESSED AIR

Compressed air, commonly called Industry's Fourth Utility to meet your needs, whether in the manufacturing industry and printing industry or to demonstrate pneumatic air operated tools and plant such as drills, wrenches & riveting hammers our team can deliver to your stand.



TECHNICAL DETAILS

VOLUME	30 LITRES/SECOND OR 70 CUBIC FEET/MINUTE
PRESSURE AVAILABLE	5-6 BAR / 85 PSI
AIR QUALITY	INDUSTRIAL QUALITY CONTAMINATION LEVELS
RESIDUAL OIL CONTENT	INDUSTRIAL QUALITY (UK)
RESIDUAL DUST CONTENT	INDUSTRIAL QUALITY (UK)
RESIDUAL WATER CONTENT	INDUSTRIAL QUALITY (UK)

For special purposes where clean or medical quality air is required this can be delivered through filtering and is a price on application item.

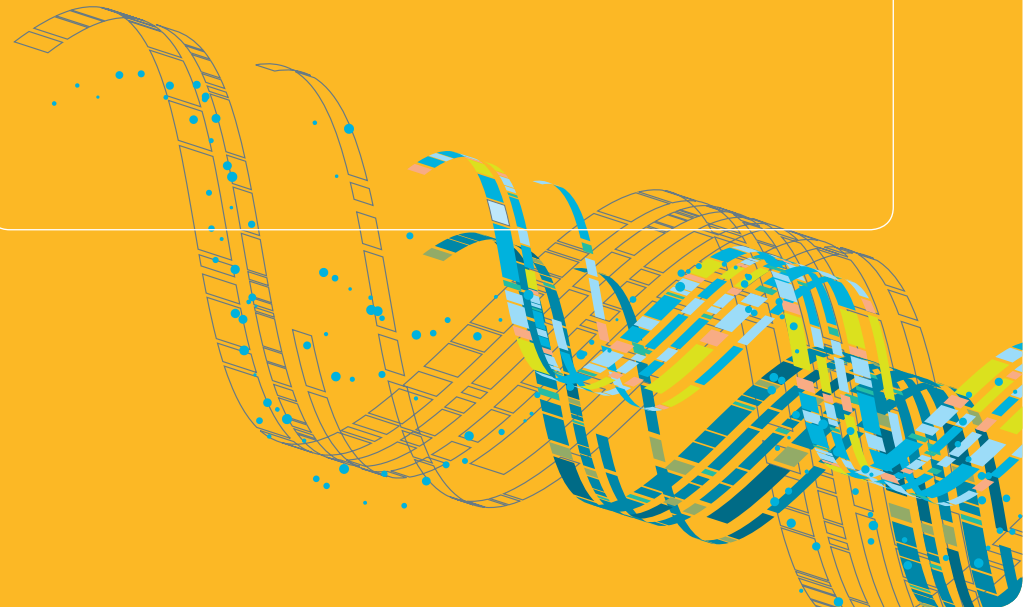
NATURAL GAS

The NEC can supply natural gas to your stand from its internal gas ring main located in the subway service tunnels. All pipework installation and final connections must be undertaken by a registered Gas Safe Engineer, The NEC can provide this as an additional service upon request.



TECHNICAL DETAILS

STANDARD GAS	NATURAL GAS
CALORIFIC VALUE	1,013 BTU / FT (8,900 KILO CALORIES / MINUTE)
PRESSURE	12" WG OR 22MM HG @ 300 CUBIC FEET / HR



THE NEC UTILITY MAINS SERVICES

3.3

MAINS - ELECTRICS



For lighting and small power supplies between 2 and 63amps The NEC now operates a system known as Plug and Play.

This is the first installation of its kind at a UK exhibition venue - and is designed along similar lines to those already operating across mainland Europe.

Drawing cables from our 30km of interconnecting floor ducts direct to your stand, Plug and Play offers you an electrical supply from our installation of 3,500 fixed socket outlets each individually computer-controlled to deliver the specified (ordered) current (amps) - and the ability to be remotely switched on and off as required.

Recognising that there are inevitably last minute changes to mains requirements, this system is designed to allow remote changes to be made - via the computer control - to mains specifications, with minimal interruptions to the existing supply. The system creates a safe and efficient means of providing mains electrics to exhibition stands.



If you require heavier electrical supplies for machinery and equipment power over 63amps and up to 630amps this can be delivered from our under hall busbar system.

The stands will not be energised until the energisation test form has been submitted by your electrical contractor to The NEC Mains Office. All electrical requirements should be ordered through your electrical contractor. As a standard the power during build will be on from 08:00hrs to 18:00hrs. Last night of build power will be on 08:00hrs until 22:00hrs as standard. If you have any requirements outside of these hours please contact the nominated electrical stand wiring contractor for the exhibition.

During show open days, power will be from 08:00hrs until 30 minutes after show close time. For requirements outside of this time please order through your electrical contractor. This excludes any 24 hour power that has already been ordered.

All electrical requirements **MUST** go through the nominated Electrical Stand Wiring Contractor for each exhibition

