

# THE NEC UTILITY MAINS SERVICES

## OUR SERVICE

Our Mains delivery team has unrivalled experience of providing temporary mains to suit all your requirements. We can provide electricity, water, waste, compressed air or natural gas to your exhibition stand from our 30km of interconnecting floor duct system.

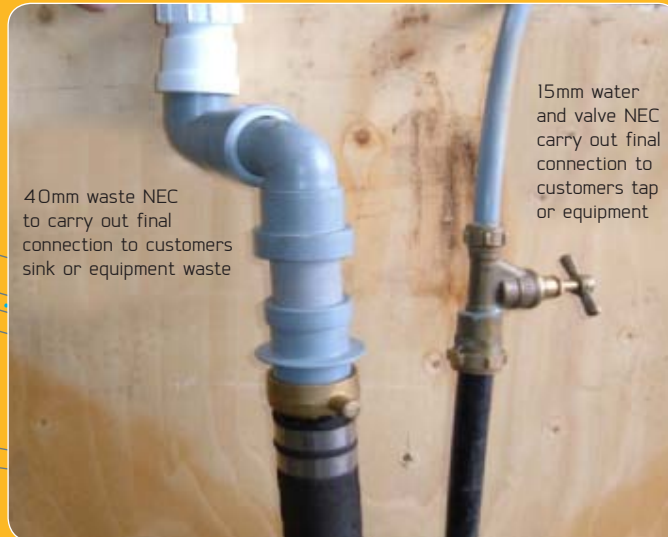
## OUR PRODUCTS

For further information or the book any of the services listed below, please contact your Event Manager. All your electrical requirements MUST go through your Electrical Stand Wiring Contractor.

### TOWN WATER & WASTE - DRAINAGE

If you need running water to your stand for hospitality or a demonstration, The NEC will be pleased to run your supply and waste mains. The water that is delivered to the stand is drawn from a potable (drinking) water source. We can also cater if you need to demonstrate a Spa Bath or Aquarium or have heavier duty industrial needs, such as cooling water to machine processes.

Typical 15mm water and 40mm waste for use on customers sinks, washing machines etc.



40mm waste NEC to carry out final connection to customers sink or equipment waste

15mm water and valve NEC carry out final connection to customers tap or equipment

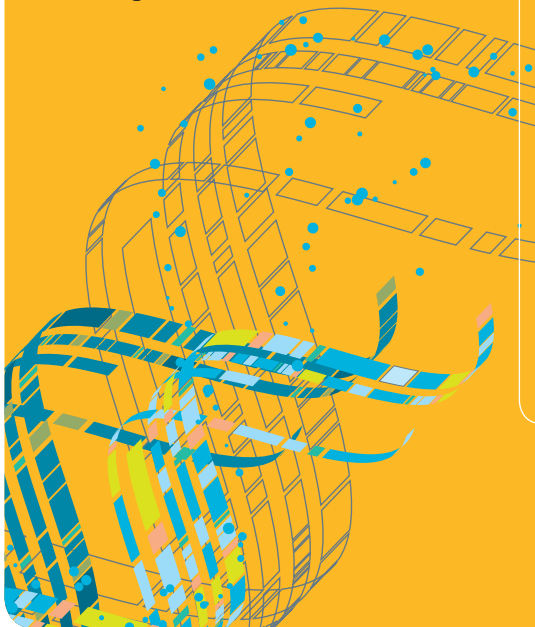
TECHNICAL DETAILS	
PRESSURE	5.6 BAR (85 PSI)
STANDARD CONNECTIONS	WATER SUPPLY AT 15MM (0.5 INCH) FLOW RATE AT 0.38 L / SEC (5 GALL/M)
STANDARD WASTE	40MM (1.5 INCH)

**PLEASE NOTE: SINK / WATER HEATER UNITS ARE NOT INCLUDED AND ARE NOT SUPPLIED BY THE NEC LTD.**

If you need running water to your stand for hospitality or a demonstration, the NEC will be pleased to supply your water and waste mains. The water that is delivered to the stand is drawn from a potable (drinking) water source. We can also cater for you if you need to demonstrate a Spa Bath or Aquarium or have heavier duty industrial needs, such as cooling water to machine processes.

TECHNICAL DETAILS	
WATER	
STANDARD PIPEWORK	15MM (0.5 INCH)
WATER PRESSURE	5.6 BAR (85 PSI)
FLOW RATE	0.38 L/SEC (5 GALL/M)
WASTE	
STANDARD PIPEWORK	40MM (1.5 INCH)

**PLEASE NOTE: SINK / WATER HEATER UNITS ARE NOT INCLUDED AND ARE NOT SUPPLIED BY THE NEC LTD.**



# THE NEC UTILITY MAINS SERVICES

2.3

## MAINS - ELECTRICS



If you need lights or power, then you will require a temporary electrical main. We can provide you with a flexible solution to meet this requirement, drawing cables from our under hall subways, via floor ducts direct to your stand, to avoid unsightly cables or hazardous trips. We offer probably the widest range of power to the exhibition and event market with a site total availability of 37.85 Mega

For lighting applications, our single phase 240 volts mains range from 2amps to 125 amps. Heavier Duty needs can be supplied from our three phase 415 volt mains, from 10 amps to 630 amps. If you require machinery power, our single phase 240 volt service ranges from 16 amps to 100 amps and the three-phase 415 volt 6 amps to 630amps.

For lighting applications, our single phase 240 volts mains range from 2 amps to 125 amps. Heavier duty needs can be supplied from our three phase 415 volt mains, from 10 amps to 630 amps and 380 volts 6



amps to 315 amps. If you require machinery power, our single phase 240 volt service ranges from 16 amps to 100 amps and the three phase 415 volt 6 amps to 630 amps.

The stands will not be energised until the energisation test form has been submitted by your electrical contractor to The NEC Mains Office. All electrical requirements should be ordered through your electrical contractor. As a standard the power during build will be on from 08:00hrs to 18:00hrs. Last night of build power will be on 08:00hrs until 22:00hrs as standard. If you have any requirements outside of these hours please contact your Event Manager.

During show open days, power will be from 08:00hrs until 30 minutes after show close time. For requirements outside of this time please order through your electrical contractor. This excludes any 24 hour power that has already been ordered.



# THE NEC UTILITY MAINS SERVICES

## COMPRESSED AIR

Compressed air, commonly called Industry's Fourth Utility to meet your needs, whether in the manufacturing industry and printing industry or to demonstrate pneumatic air operated tools and plant such as drills, wrenches & riveting hammers our team can deliver to your stand.



### TECHNICAL DETAILS

<b>VOLUME</b>	30 LITRES/SECOND OR 70 CUBIC FEET/MINUTE
<b>PRESSURE AVAILABLE</b>	5-6 BAR / 85 PSI
<b>AIR QUALITY</b>	INDUSTRIAL QUALITY CONTAMINATION LEVELS
<b>RESIDUAL OIL CONTENT</b>	INDUSTRIAL QUALITY (UK)
<b>RESIDUAL DUST CONTENT</b>	INDUSTRIAL QUALITY (UK)
<b>RESIDUAL WATER CONTENT</b>	INDUSTRIAL QUALITY (UK)

For special purposes where clean or medical quality air is required this can be delivered through filtering and is a price on application item.

## NATURAL GAS

The NEC can supply natural gas to your stand from its internal gas ring man located in the below hall subway service tunnels. All pipework installation and final connections must be undertaken by a registered Gas Safe Engineer, The NEC can provide this as an additional service upon request.



### TECHNICAL DETAILS

<b>STANDARD GAS</b>	NATURAL GAS
<b>CALORIFIC VALUE</b>	1,013 BTU / FT (8,900 KILO CALORIES / MINUTE)
<b>PRESSURE</b>	12" WG OR 22MM HG @ 300 CUBIC FEET / HR

